

in the upper right corner of Fig. 5, as shown in Fig. 6, and click "Commit" after the input is complete.

6.4 Setting WiFi on Mobile App

Please complete the following operations within 10 minutes after the camera is powered on:

1. Power on the camera (no need to connect to the network cable);
2. As shown in Fig.7, click "WiFi Settings"->"Sound wave Configuration WiFi" to enter Fig.9;
3. Select the WiFi to be configured and enter the WiFi password, click "OK";
4. Turn up the volume of the phone and move the phone closer to the camera, and the phone sends sound waves to the camera;
5. Wait for the camera voice prompt "WiFi connect successfully";
6. After prompting that the configuration is successful, return to the regional interface. After a while, the camera will go online.

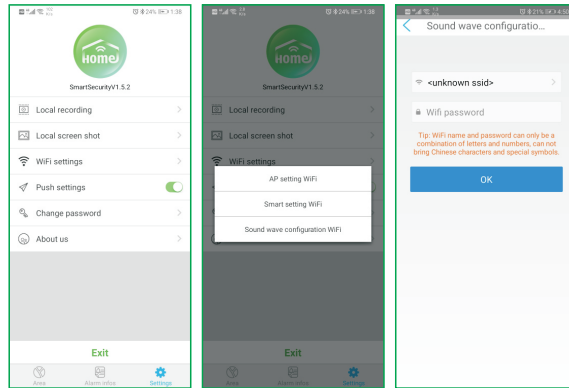


Fig.7

Fig.8

Fig.9

If the camera is not online, please check whether the configured WiFi is available and the password is correct.

7. Installation steps

- a. Use a Phillips screwdriver to loosen the side screws of the bracket, as shown in Fig. 10;
- b. Adjust to the appropriate installation angle and tighten with a Phillips screwdriver;
- c. Align the screw hole into the screw, as shown in Fig. 11;
- d. Hold the camera with your hand, stretch outward and move left and right for horizontal adjustment, as shown in Fig. 12.

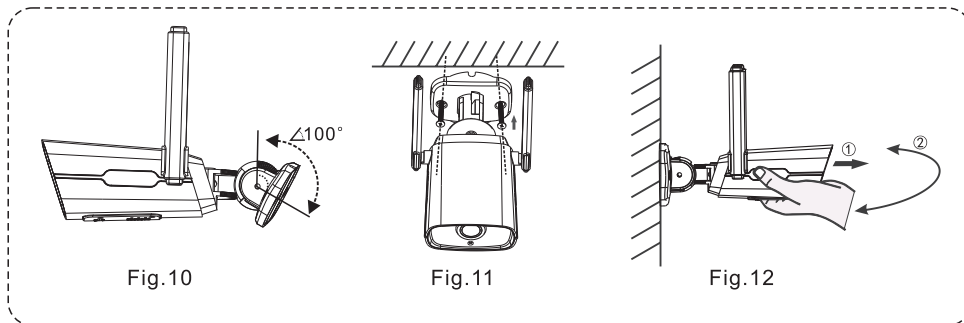


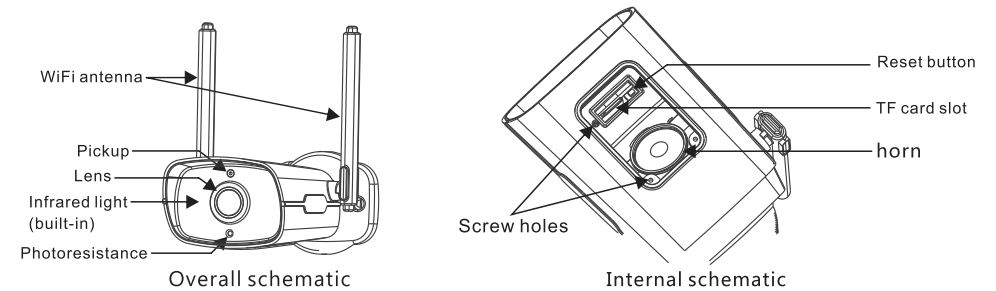
Fig.10

Fig.11

Fig.12

HA-8405 Indoor Infrared IP Camera Installation Instruction

1. Structure description



Infrared light irradiation distance: 3~5 meters

Bracket rotation: 110° horizontal rotation; 100° vertical rotation

Insert the TF card or use the reset button, please unscrew the bottom four screws first.

TF card slot: storage interface, when the bottom of the camera is facing up, the side of the TF card with the magnetic disk is inserted into the camera in the direction of the lens; pressing the TF card inward will automatically pop up.

Reset button: Restore factory settings, use this button to press the small button for 3 seconds with a thimble-like object.

2.Parameters

Product model: HA-8405

Operating system: embedded Linux

User interface: IE browser, CMS client, mobile client

Video format: main stream 1440*1440 20fps
Substream 320*320 15fps

Storage format: AVI

Video compression format: H.265

Packing time: 15 minutes

Network interface: RJ45, 10M/100M adaptive network interface

WiFi Configuration: Program on WEB IE, Program on Smartphone APP

Memory interface: TF card, maximum support 128G

Video agreement: Meian-private protocol, P2P protocol, Onvif protocol

Image sensor: GC2053,200W (1920*1080)

Lens: 3.6mm security surveillance lens

Wireless connection distance: ≤100m

Power supply: DC 12V/2A

Measurement: (L*W*H) 148*109*185mm

Operating temperature: -5~55°C

Installation location: outdoor places, such as streets, playgrounds, etc.

3. Network connection

1. Network cable connection

Use the power cord to connect the camera to the power supply, connect to the router through the network interface, and connect to the same router as the computer.

2. Wireless connection

Connect the power cord and network cable to the camera and log in to the IE interface to set up. After the setting is completed, disconnect the network cable; or enter the mobile phone APP after power on to set up the WiFi connection.

Notice: keep IP camera and computer in the same segment of IP address.


4. Camera Settings

The IP address of the camera is automatically assigned by the router. Users can obtain the IP address as follows:

- Obtain "intranet search tool" for search at the seller;
- Log in to the mobile phone APP. (APP download details see "6.Phone Application Settings") Log in to the IP address on the web page, as shown in the following figure.



After logging in, the web page displays the download page and downloads as prompted.

After download, right click the icon  to run it as an administrator, Follow the popup prompts to install.

Notice: before installing the ActiveX, close all IE browsers.

After the software is installed, re-log in the device's IP address on the web page and enter the login page.

As shown in Fig. 1, enter "admin" at the user name, select "English" for the language option, and click "OK" to enter the main interface. Fig. 2.



Fig.1

Reminder: When the device is shipped from the factory, the user name is admin, and the password is empty. Users can directly log in to the main menu. In order to consider the security of the operation of the device, the administrator is required to enter the "user management" item on the "System Settings" page of the system to modify the password of this device.

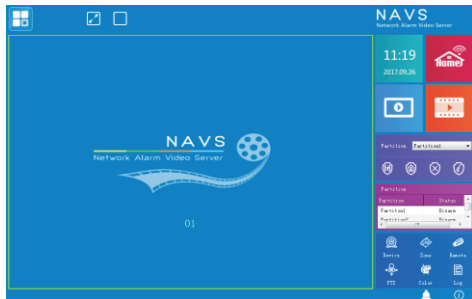


Fig.2

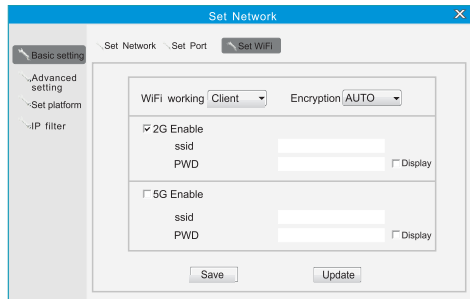


Fig.3

5. Set WiFi in IE interface

After entering IE main interface, click icon  set network "Basic setting" - "Set WiFi".

Encryption mode is "AUTO", select "2G enable" shown in Fig.3. ssid and password are the WiFi name and password respectively. After setting, click "Save" and disconnect the cable network. After 5seconds, the camera will give voice prompt "WiFi is connecting". When camera voice "WiFi connected successfully", the setting is done.

6. Phone Application Settings

6.1 Download and Installation

Please scan the QR code below to download and install.

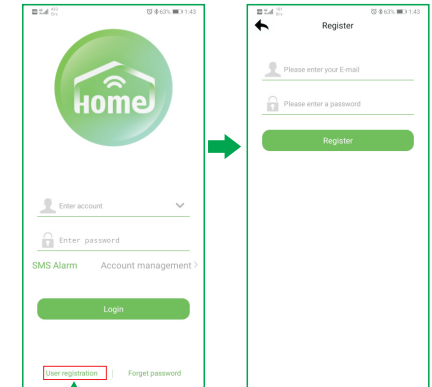


Android



iPhone

Click the icon below to enter settings.



For new users, please click "user registration".

6.2 Account registration

Click the app to enter login interface as show in the right.

User name: (EMAIL)
Password: (set as you like)
After setting, please enter the code and click "Register".

After the registration is successful, the interface will automatically jump to the login interface, and the user clicks on login.

6.3 Add Panel

To view the video through the APP, the user needs to scan the QR code to add the camera to the APP device list. After the initial login, the device automatically enters the interface for adding a device. As shown in Fig.4, click the blue icon "+" to enter the code scanning interface. Scan the QR code on the sticker at the bottom of the camera, and a prompt window will pop up after scanning successfully, as shown in Fig. 5, The user can also enter the input interface by clicking "Manual"

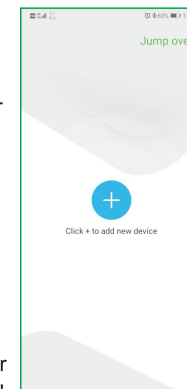


Fig.4

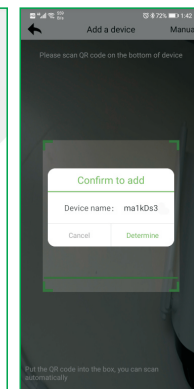


Fig.5

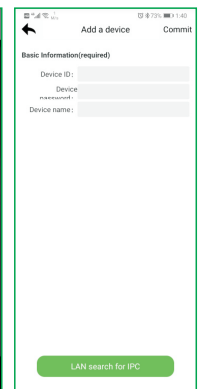


Fig.6